

Kacey Diagnostics

KMD501

PROFESSIONAL VETERINARY DIGITAL MICROSCOPE

This high performance digital microscope is designed for professionals, by professionals who require superior optical performance, durability and the ability to grow with your practice. The camera features an 8" Touch Screen display with a 5 Megapixel chip for crisp and clean images. From bright field to dark field to phase contrast and beyond, the **KMD501** is the microscope of choice for clinical Veterinary use.

Features:

The **KMD501** has a full size stand for enhanced stability. It features an ergonomic Seidentopf head that rotates 360 degrees in two axis and offers a wide interpupillary range. This system allows you to view your specimen on the screen and through the binocular body at the same time. The precision co-axial focus mechanism has a large low drive, scratch proof mechanical stage with room for two slides. Reversed facing nosepiece protects the objectives and provides clear access to the stage.

Illumination:

The **KMD501** is equipped with the latest high power LED lighting system that renders a more uniform output at any level with a much higher color temperature (6000 Kelvin) beam, while producing little or no heat. Bulb lasts up to 100,000 hours of operation equivalent to 10 years of normal use!

Optical System:

The **KMD501** is equipped with high resolution Semi Plan objectives. K-Plan, K-Plan XL and K-plan phase contrast with dark field are also available.

Digital:

We saved the best for last. The **KMD501** is equipped with an 8" Touch Screen @1024x768 resolution and a digital camera with a 5 Megapixel chip. Save your images on an SD card up to 32G and even send them anywhere in the world with Wi-Fi and Bluetooth connectivity. The Android™ operating system allows on screen precision measuring with the a stage micrometer (included) and host of other options like a normal tablet. With USB, Mini USB and HDMI outputs the system can connect to an external monitor or computer. With a solid platform, HD optics and digital components, the **KMD501** is ready to serve the veterinary community.



Features At A Glance

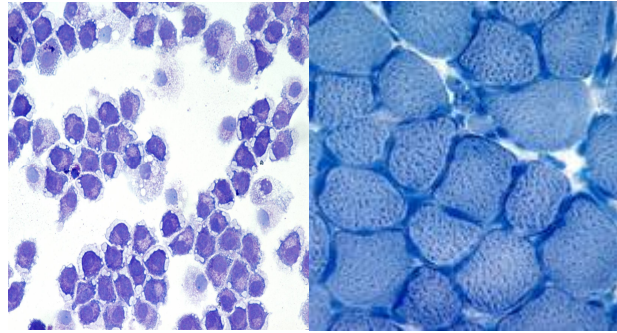
- W10X 20mm eyepieces standard
- 8" Touch Screen @720 w/ a 5 Megapixel camera
- High Performance Semi Plan Achromats
- Sealed 40x & Condenser prevents contamination
- Anti mold head
- All metal gearing
- Scratch resistant stage
- FDA approved synthetic lubricant
- Upgradeable to a Bright field, Dark field and Phase Contrast
- High performance 3 watt LED illumination
- Cool white light at 6000 Kelvin
- Long life LED bulb (100,000 hrs vs Halogen at 3000 hrs)
- CE approved and CLIA compliant
- Twin fuse electrical system
- 1 Year Full Warranty



“Providing Better Animal Care!”



Specifications



LENGTH	WIDTH	HEIGHT	WEIGHT
9.5"	7.25"	23.25"	24.5 lbs

MODEL	HEAD	EYEPIECE	OBJECTIVES	CONDENSER	ILLUMINATOR
KMD501 w/ Semi-Plan	Trinocular Seidentopf	W10XD 20mm FN	4XD, 10XD, 40XRD (sealed) 100XRD Semi Plan	Abbe 1.25 NA (sealed) Rack & Pinion	LED w/Dimmer Switch

Accessories for KM500 Series:

OCCULAR BODIES & DIGITAL IMAGING

- KMA570 Binocular Seidentopf Head
- KMA571 Trinocular Seidentopf Head w/ Adapters for digital camera use & W10XD, 18mm FN Eyepiece
- KMDC-1 5 megapixel, 8" Touch Screen tablet camera that mounts on the Trinocular body (sold separately KMA-571) so that you can view through the eyepieces or on the screen. Includes power source, cables and imaging software for PC.

EYEPIECES

- KMA573 W10XD, 20mm FN (pair)

OBJECTIVE KITS & SINGLE OBJECTIVES

- KMA520 4XD, 10XD, 40XRD (Sealed), 100XRD Semi Plan
- KMA530 4XD, 10XD, 40XRD (Sealed), 100XRD K-Plan
- KMA560 4XD, 10XD, 40XRD (Sealed), 100XRD K-Plan XL
- KMA550 K-Plan Phase System with 4XD, 10XD Phase, 40XRD Phase (Sealed), 100XRD Phase. Includes multi phase carousel for phase, bright field & dark field, 1.25 NA condenser, centering telescope and green filter
- KMA540 Infinity corrected C-Plan objective set with matching Seidentopf head. 4XD, 10XD, 40XRD (Sealed), 100XRD
- KMA523 20XD Semi Plan Objective
- KMA533 20XD K-Plan
- KMA553 20XD K-Plan Phase
- KMA535 50XD K-Plan Oil

ADDITIONAL ACCESSORIES

- KMA581 LED Pointer

1 Year Full Warranty from Kacey Diagnostics: All Kacey Veterinary Systems microscopes have a one year warranty against defects in material and workmanship. This warranty is conditional and claims are subject to review by Kacey Diagnostics. Damage resulting from repair by unauthorized parties or damage deemed to be from accident, alteration, misuse, abuse, improper return shipping or act of God are not covered. Warranty claims can only be authorized by Kacey Diagnostics technicians and will be repaired free of charge when returned postage paid to our microscope center in Elk Grove, CA. This warranty gives you specific legal rights and you may also have other rights which vary from state to state. Kacey Extended Warranties are available.

Design Changes: Kacey Veterinary Systems reserves the right to make changes in instrument design in accordance with changes in technology without notice or obligation.

Authorized Kacey Diagnostics Dealer:



1854 A Hendersonville Rd
Asheville, NC 28803
Ph: 1(828)685-3569
Fax: 1(828)685-3571
www.KaceyDiagnostics.com